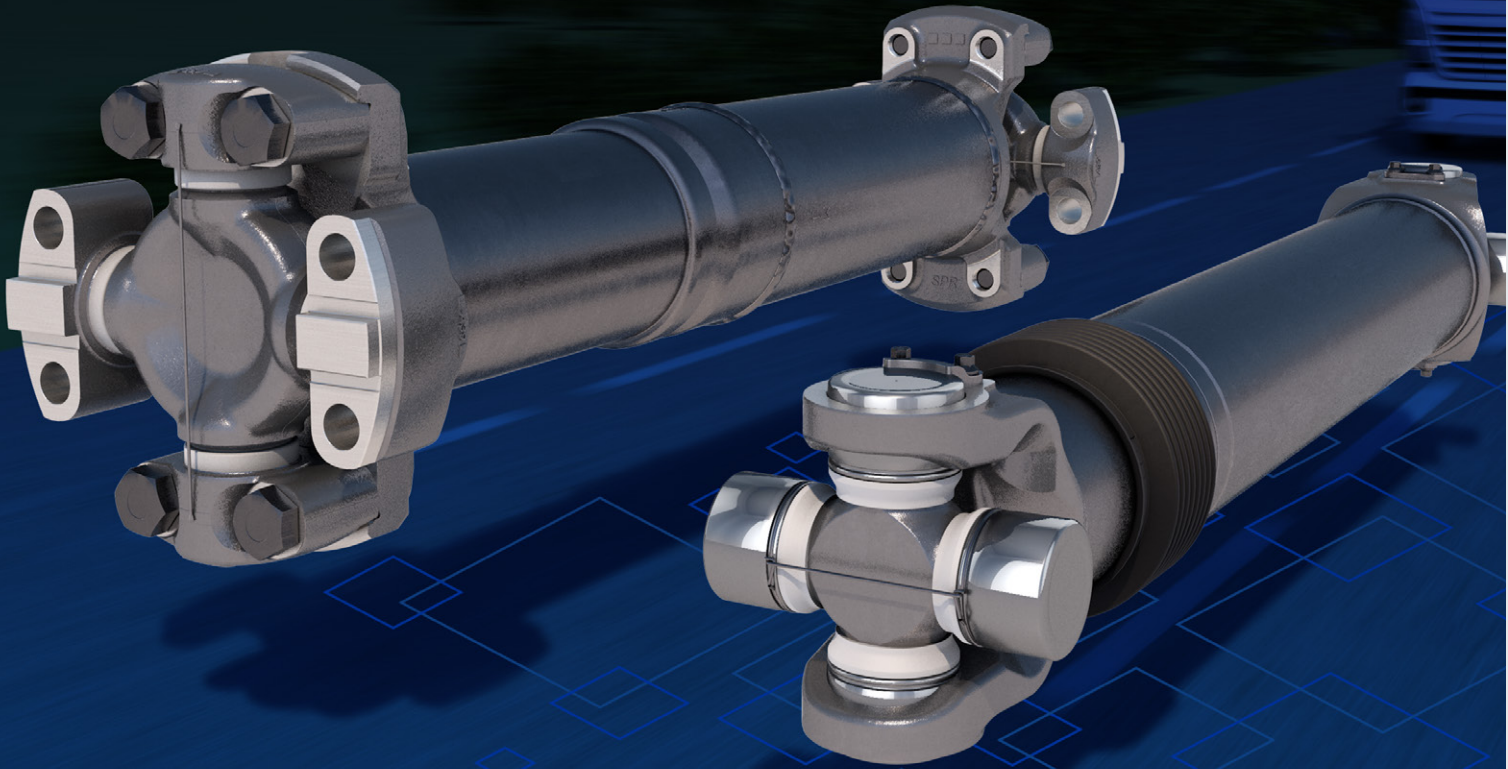


# SPICER®



## Spicer ReadyPack™ and Spicer Wing in a Box Kits

Driveshaft, Coupling Shaft,  
and Interaxle Shaft Assemblies



### Professionally Preinstalled Kits Save on Time, Labor and Cost

Spicer ReadyPack™ preassembled kits for driveshafts, coupling shafts, and interaxle shafts support the efficiency of your business with streamlined ordering, and savings on inventory, labor, and your total investment.

The Spicer ReadyPack kit arrives with u-joints that are professionally installed in the yoke shaft and in the tube yoke. Kits featuring SPL® u-joints come pre-greased with production lube.\*

# SPICER®

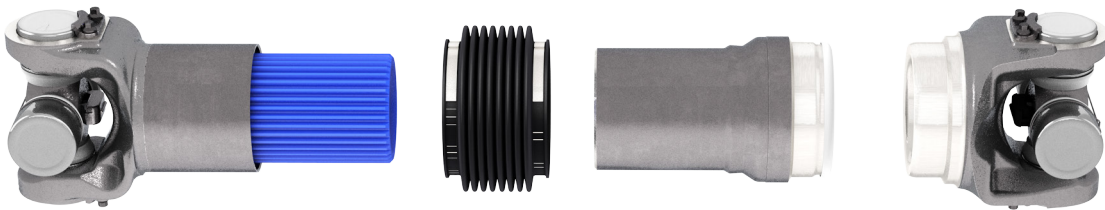
ReadyPack™ 

# SPICER®

ReadyPack™ 

## Spicer ReadyPack™ Preassembled Kits Deliver Convenience

On your next rebuild, don't waste time and money ordering individual parts, or waste space on inflated inventory. Out of the box, each Spicer ReadyPack preassembled kit comes with the u-joint installed in the yoke shaft for the slip joint, and in the tube yoke for the tight joint. In Spicer ReadyPack kits for the SPL® series, the SPL® u-joints are already packed with production grease and sealed with the multi-lip seal.\*



With Spicer ReadyPack, you get the guarantee that your shaft is built using only Genuine Spicer parts. Save time and money and get everything you need for a thorough and lasting shaft rebuild, with parts that are as good as or better than the OE parts they replace.

### Spicer ReadyPack Benefits:

#### Cost Savings

- Quantifiable savings compared to purchasing the kit components individually
- Save on cost of grease with SPL u-joint kits

#### Increased Efficiency

- Streamlined ordering
- Less inventory

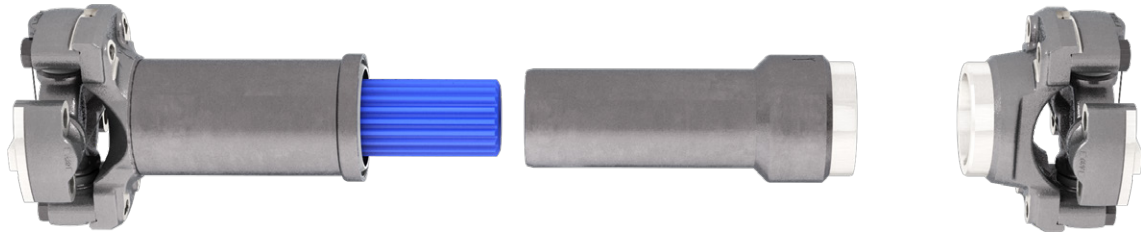
#### Reduced Installation-Related Downtime

- Coupling shaft kit: save 15 minutes
- Driveshaft kit: save 30 minutes
- Interaxle kit: save 30 minutes

Series	New ReadyPack Part #	Base Part #	Description
PL250	DB250D55003C	250DS55003C	Driveshaft XL (Steel)
SPL250	DB250C54003C	250CS54003C	Coupling Shaft XL
SPL170	DB170I55001C	170IA55001C	Interaxle XL Shaft
SPL170	DB170I55010C	170IA55010C	Interaxle XL Shaft
SPL170	DB170C54005C	170CS54005C	Coupling Shaft
1810	DB1810C817099	817099	Coupling Shaft
1810	DB1810D5002266	5002266	Driveshaft (Steel)
1710	DB1710C810549	810549	Coupling Shaft
1710	DB1710C807369	807369	Coupling Shaft
1710	DB1710I817264	817264	Interaxle Shaft
1710	DB1710I906354	906354	Interaxle Shaft
1710	DB1710D810588	810588	Driveshaft (Steel)

# SPICER®

ReadyPack™ 



Serie	Description	SPICER Material	U-Joint Type	Bolt	Slip mm
WING SERIES 108M40 - 4C	WING IN A BOX	3600001000	Relube	English	50
WING SERIES 108M40 - 4C	WING IN A BOX	3600001044	Service	English	50
WING SERIES 115M50 - 5C	WING IN A BOX	3600001001	Relube	English	60
WING SERIES 115M50 - 5C	WING IN A BOX	3600001045	Service	English	60
WING SERIES 140M60 - 6C	WING IN A BOX	3600001002	Relube	English	60
WING SERIES 140M60 - 6C	WING IN A BOX	3600001053	Relube	English	120
WING SERIES 140M60 - 6C	WING IN A BOX	3600001046	Service	English	60
WING SERIES 148M70 - 7C	WING IN A BOX	3600001003	Relube	English	130
WING SERIES 148M70 - 7C	WING IN A BOX	3600001038	Service	English	130
WING SERIES 165M85 - 8,5C	WING IN A BOX	3600001004	Relube	English	130
WING SERIES 165M85 - 8,5C	WING IN A BOX	3600001048	Service	English	130
WING SERIES 206M80 - 8C	WING IN A BOX	3600001108	Relube	English	130
WING SERIES 206M80 - 8C	WING IN A BOX	3600001007	Relube	English	130
WING SERIES 206M80 - 8C	WING IN A BOX	3600001047	Service	English	130
WING SERIES 209M90 - 9C	WING IN A BOX	3600000999	Service	English	150
WING SERIES 209M90 - 9C	WING IN A BOX	3600001005	Relube	English	150
WING SERIES 213M100 - 10C	WING IN A BOX	3600001006	Relube	English	150
WING SERIES 213M100 - 10C	WING IN A BOX	3600001049	Service	English	150
WING SERIES 222M110 - 11C	WING IN A BOX	3600001008	Relube	English	150
WING SERIES 222M110 - 11C	WING IN A BOX	3600001050	Service	English	150
WING SERIES 260M150 - 15C	WING IN A BOX	3600001055	Relube	Metric	130
WING SERIES 260M150 - 15C	WING IN A BOX	3600001056	Relube	English	130
WING SERIES 260M150 - 15C	WING IN A BOX	3612740057	Service	English	130
WING SERIES 260M150 - 15C	WING IN A BOX	X-10101-00	Service	English	130
WING SERIES 280M220 - 12,5C	WING IN A BOX	3600001110	Relube	Metric	135
WING SERIES 288M120 - 12C	WING IN A BOX	3600001111	Relube	Metric	135
WING SERIES 310M230 - 14,5C	WING IN A BOX	3612860014	Low	Metric	135
WING SERIES 310M230 - 14,5C	WING IN A BOX	3600001113	Low	Metric	135
WING SERIES 339M140 - 14C	WING IN A BOX	3600001112	Relube	Metric	130

**For more information on this or any other Spicer driveline products, contact your sales representative or visit [SpicerParts.com](http://SpicerParts.com).**

\*Spicer ReadyPack SPL u-joints are pre-greased, while Spicer ReadyPack 10 Series u-joints must be greased before use.

## Dana Aftermarket Group

Dana Investment GmbH  
Reinzstrasse 3-7  
89233 Neu-Ulm, Germany

Follow SpicerParts [f](#) [i](#) [in](#)

© 2021 Dana Limited. All rights reserved.

# SPICER®

